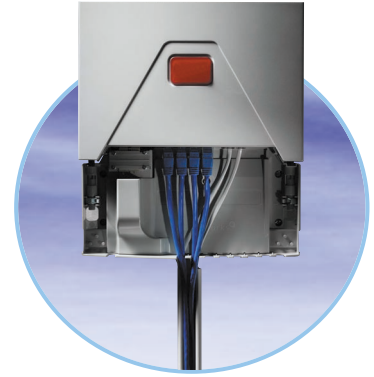


Media converters and Customer Premises Equipment

Active optical fiber solution for fast symmetrical, bi-directional data transfer to simultaneous services

As an incumbent or competitive local exchange carrier, you want to deploy Triple Play services to your customers via fiber, but in the most efficient, simple, and cost-effective way. For your local exchange or outside nodes, you need a media converter which can transform a copper signal to an optical signal that can run right up to thousands of residences. Here you want to install a Customer Premises Equipment (CPE) outlet, offering easy plug-and-play connectivity for a host of devices: PC, VoIP, IPTV and even conventional copper-based telephony.



Nexans provides complete FTTH solutions based on the Fast Ethernet and Gigabit Ethernet standard for four different topologies: neighborhoods, apartment blocks, rural areas, and business complexes. Our own FiberCon media converters can be located at central office, in street cabinets or large buildings to deliver 100 Mbit/s both upstream and downstream. For customer convenience, Nexans provides an attractive 6-outlet CPE, into which a subscriber can plug all home equipment (including conventional telephone). To reduce installation cost and to protect the optical fiber in the home environment, a passive Fiber Termination Unit which includes a splicing box and a fiber optic connector is combined with the active CPE, thus saving the operator expensive house servicing.

These Nexans FTTH solutions give you:

- **Speed:** 100-200 times faster than xDSL; can deliver all Triple Play applications, like video-on-demand, home teleconferencing, HD television to multiple TV sets in the home
- **Quality of Service:** to guarantee the required data rates for multimedia applications
- **Security:** virtual LAN structure (separating traffic) is safe from hackers
- **Flexibility:** can handle both digital and analogue (POTs) services
- **Lower operating expenses:** through simple do-it-yourself subscriber connections and auto-configuration
- **High scalability:** since data rates are tailored to actual use, more billing options
- **Easy management:** Simple Network Management Protocol (SNMP) to connect, disconnect and reconfigure subscriber services (e.g. data rates per port)

For further information: www.nexans.com/e-service

All drawings, specifications, plans and details concerning weight, size and dimensions in Nexans technical or commercial documents are of an indicative nature only, and are not binding on Nexans, who reserves the right to modify its products.